



An ISO 9001:2015 Certified Company

5G STRIP/ PATCH ANTENNA

Technical Specifications:

Model No	GLEAMS5G05
Frequency Range (MHz)	700-960/1710-4000
SWR	1.5 Less than
Gain	5 DBI
Operating Temp	-40 °C to +60 °C
Lightning Protection	DC Ground
VSWR	≤2.00
Polarization	Vertical
Maximum Input Power (W)	50
Impedance(ohm)	50
Connector Type	SMA/CRC9/TS9/Customized
Cable	Rg316
Cable Length	Customized
Radome Material	ABS
Radome Color	Black

Features

- Wide Frequency Range
- Excellent Electrical Performance
- Maintenance Free

CALL OR  **+91-8800386366**

Follow Us For More Updates **GLEAMLIGHTINDIA** /     

Info@gleamlightindia.com www.gleamlightindia.in/gleamlightindia.com

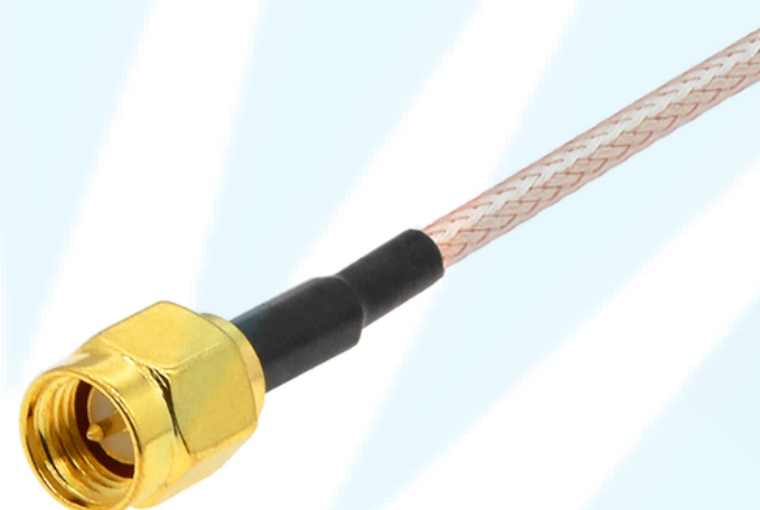
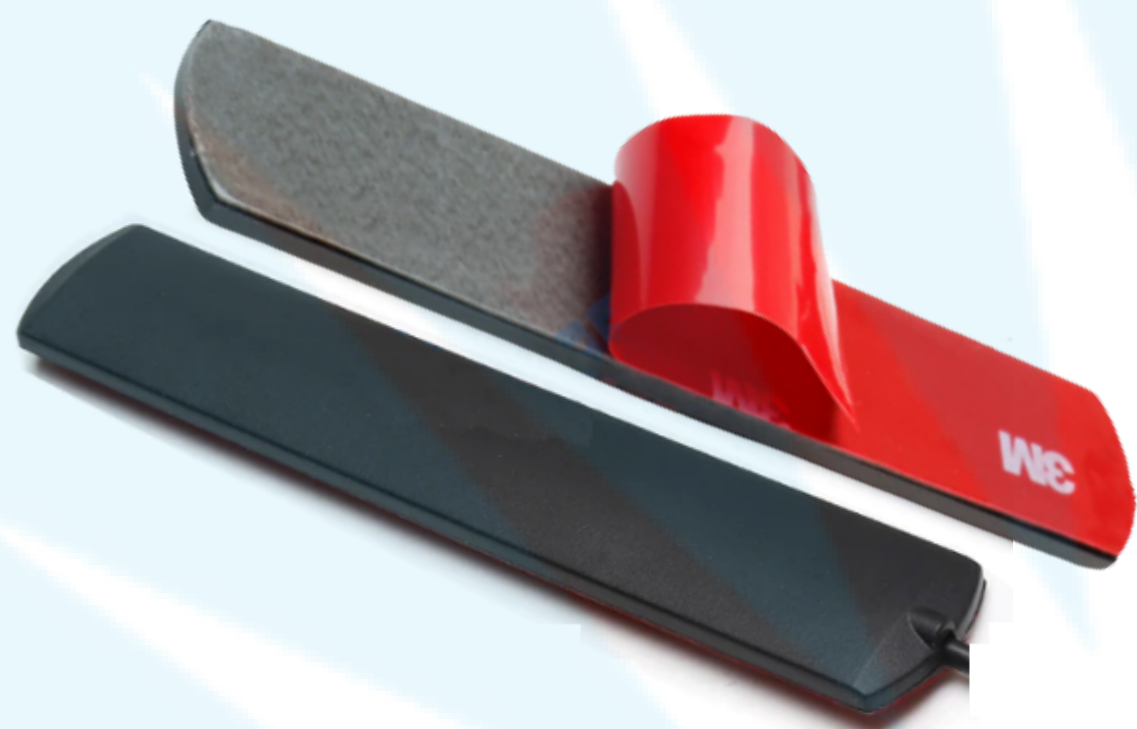
12B Block -A, Behind Kanishka Garden, Amar Colony Main Rohtak Road Nangloi, New Delhi, Delhi 110041





An ISO 9001:2015 Certified Company

5G STRIP/ PATCH ANTENNA








Connector Cable RG 316

Application

- GSM
- GPRS
- 5G
- 4G
- 3G
- NB-IOT

CALL OR  +91-8800386366

Follow Us For More Updates **GLEAMLIGHTINDIA** /     
Info@gleamlightindia.com www.gleamlightindia.in/gleamlightindia.com

12B Block -A, Behind Kanishka Garden, Amar Colony Main Rohtak Road Nangloi, New Delhi, Delhi 110041

